



### Camperdown

**Expressions Of Interest**

#### Warehouse - Style Office In Great Position!

Zoned 'mixed usage' this 23 m<sup>2</sup> Victorian, Woolshed Conversion boasts 6.5 metre high Cathedral ceilings, skylights and air-conditioning. Currently rented at \$12,584.00 per annum. Excellent position on a main bus route and close to the CBD. Strata Rates: Approx \$240 p.q. Council: \$72.50 p.q Water: \$80.50 p.q

1 Bed 1 Bath



### Camperdown

**Expressions Of Interest**

#### Warehouse - Style Office In Great Position!

Zoned 'mixed usage' this 22 m<sup>2</sup> Victorian, Woolshed Conversion boasts 6.5 metre high Cathedral ceilings, skylights and air-conditioning. Currently rented at \$9,100.00 (+ GST) per annum. Excellent position on a main bus route and close to Broadway and the CBD. Strata Rates: \$240 p.q. Council: \$72.50 p.q Water: \$80.50 p.q A must to inspect!

1 Bed 1 Bath



### Castle Hill

**Contact Agent**

#### IN LAW ACCOMMODATION!

Undeniably impressive and offering complete comfort, this lovingly looked after by the one owner home, has a host of features that's ready for the ever growing family to move in and enjoy. Ideal for fully self contained in-law accommodation, as well as a work from home business area or if you like, studio apartment. Sitting on more than an acre of prime land. This truly is one Castle Hills finest properties. Inspect by appointment!

7 Bed 5 Bath 5 Car



### 4/39 Dangar Place, Chippendale

**Mid To High \$500,000s**

#### Light-Filled, Spacious Apartment With Two Car Parks!

This large two bedroom apartment (86 sqm) with two balconies is located in a quiet area of Chippendale in walking distance to the City, Broadway Shopping Complex, Sydney University, UTS and TAFE. Both bedrooms have built-ins wardrobes (the master has a particularly large one). The very functional kitchen has a new glass cooktop, the bathroom has a separate bath and shower, and there is a good-sized laundry room. The apartment also comes with new carpet and a new hot water system. The two security car spaces are a special bonus. Excellent investment or move in and enjoy city...

2 Bed 1 Bath 2 Car



### Clemton Park

**Expressions Of Interest**

#### Freestanding, Brick Home (circa 1955) In A Cul-de-sac!

This brick veneer home close to Clemton Park Village is situated on a large block of land (645 sqm). Accommodation comprises three bedrooms, two living areas, a study, bathroom with separate toilet and a big laundry room. There are floorboards under the carpet and there is a garage on title. In need of minor renovating this is an ideal family home in an excellent position close to transport. A must to inspect!

3 Bed 1 Bath 1 Car



## Erskineville

**Contact Agent**

### ONE OF A KIND!

This freestanding classic Victorian terrace "Bonnieoon" is set upon a 302m<sup>2</sup> block of land with plenty of room for entertaining. Featuring a separate studio with a double bedroom with a living room incorporating a kitchenette. Located in a quiet street, parks, transport and schools are all within walking distance as well as King Street and Erskineville village.

4 Bed 2 Bath 2 Car



## Newtown

**Contact Agent**

### ONE OF A KIND!

This freestanding classic Victorian terrace "Bonnieoon" is set upon a 302m<sup>2</sup> block of land with plenty of room for entertaining. Featuring a separate studio with a double bedroom with a living room incorporating a kitchenette. Located in a quiet street, parks, transport and schools are all within walking distance as well as King Street and Erskineville village.

4 Bed 2 Bath 2 Car



## Tempe

**Contact Agent**

### VACANT LAND

Here lies an exceptional opportunity to create a dream home in one of Marrickville's finest streets. This vacant landholding is conveniently situated within walking distance to IKEA, public transport and all amenities, offering the perfect opportunity for a family friendly lifestyle. Build your dream home in the heart of the inner west. Set on a 381sqm block of land. Level piece of land on a wide and quiet street. DA approved plans for single level residential dwelling. Ideal location offering the ultimate in convenience. Walking distance to Tempe station.



## Tempe

**Contact Agent**

### OOZES CHARACTER!

This two storey character filled home situated on an enormous 455 sqm block of land is ideal for the growing family. • Features include four bedrooms (main with en-suite) • Combined lounge and dining • Separate rumpus room sweeping out to wrap around balcony • Plenty of parking as well as lock-up garage and workshop A unique find, inspections a must.

4 Bed 2 Bath 4 Car



## 11 Bridge Street, Tempe

**Contact Agent**

### Free Standing Four Bedroom Home!

With its updated interiors and walking distance to all family essentials, this free standing home is tastefully modern and presented well throughout to offer spacious low maintenance living with local convenience. • High ceilings, air conditioning and timber floors throughout • Four double sized bedrooms or three plus generous study • Full main bathroom, laundry has a second shower and w/c • Designer kitchen with breakfast area and quality appliances • Timber decking overlooking resort style pool • Easy street parking, walk to Tempe or Sydenham Stations • Walking distance to the...

4 Bed 2 Bath



## Tempe

### "Lymerston House"

This 1840's Victorian residence rests amid stunning north east facing landscaped gardens on a private 1588sqm landholding. 'Lymerston House' was built in 1842-1843 by Richard Way, an Elizabeth St solicitor. His daughter, Anne died at the age of 9 has a window dedicated to her in the Anglican Church at St Peters. Richard died in 1872. The property was purchased in 1884 by the NSW Government and housed the railway workers between 1884 and 1909 while the railway was constructed. The property was then vacant until it was acquired by the Sisters of Mercy and was used as a convent from 1915 to 1982....

7 Bed 4 Bath 3 Car



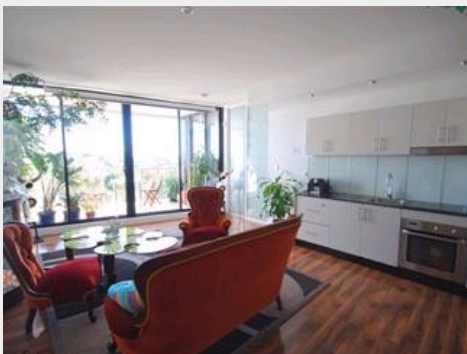
## Ultimo

**\$199,950**

### Spacious, Furnished Apartment!

Excellent large 29m<sup>2</sup> studio apartment with air con, and ensuite bathroom in the Unilodge providing a great rental return. Ideally located close to Broadway Shopping Complex, Sydney University, University Technology and TAFE. Fully managed by a professional student accommodation management company for a worry free investment. High consistent rental cash flow. Great facilities including: - Heated indoor swimming pool - Hot Jacuzzi - BBQ facilities - Food court - Concierge - Roof top entertaining area with city/district views Ideal inner city investment Inspect 7 days a week

1 Bed 1 Bath



## Waterloo

**\$479,000**

### Creative Designer Living!

Gorgeously re-created one bedroom apartment on top floor of designer building. Combined living / dining / kitchen with caesar top, splash back, dishwasher, overlooking picturesque district views. Well sized bedrooms with built-in and access to the balcony. Stylish bathroom with stone featured shower and internal laundry. Polished floorboards throughout. Pet friendly building with lift and carspace.

1 Bed 1 Bath 1 Car



## Marrickville

**\$529,000**

### Space and Light Plus Great Potential!

Conveniently positioned within minutes walk to Cooks River Park, Marrickville Golf Course, shops and train station, this sunny and freshly-painted apartment offers spacious open-plan living in the security building with lock-up garage. Featuring: • Generous open-plan living and dining area • Three bedrooms (main with built-in wardrobes) • Lock-up garage • Large kitchen • Separate bath and shower • Internal laundry with storage space • Sunny balcony with leafy outlook With easy access to shops and major transport, this apartment provides a convenient, peaceful and enjoyable...

3 Bed 1 Bath 1 Car